

CAMBRIDGE PRIMARY SCHOOL

WEEKLY CATCH UP

Value of the Month— Unity

12th June 2020

Dear Parents, Carers and Children

It really has been great to see and chat to so many of you this week. Our Year 6 and Rainbow Groups have settled really well. We have had lots of interest from others to access this group so have decided to open another two groups in order to welcome as many children as we can going forwards. Obviously, we want to take this slowly to ensure that everybody is secure with our new routines and rules. There is a little space left in each of the groups. If you think your child would benefit from being in one of our groups, please give us a ring. Once these groups are full, we will not be able to take any further children for the rest of this school year. Priority will be given to working parents who require childcare; children with special educational needs and children who are needing the routine and structure that school offers. We are sorry that we are not going to be able to see all of the children in school before September but hope that you understand that the safety of children and staff is paramount.

On that note, may I remind all of our school community that although the situation regarding Covid-19 does thankfully seem to be improving, the message from the government is still very definitely that everybody needs to **continue to stay alert**. In school, our guidance says, and our personal experience has shown us, that primary school **children find it very difficult to maintain social distance—2m apart**, especially when on their own. Although we are now able to meet with up to six people from different households while maintaining social distance, personally I would be very wary about allowing children to 'play out' in groups of up to six. In my view, children need adult help, encouragement and reminders to keep their distance from others, including their friends. I would urge all parents to **keep children under supervision at all times**, even for those in Y5 and Y6. In school, we are making sure that different groups of children do not mix. If this is not the case outside of school, it increases the risk of pupils and staff in school.

Thank you for your on-going support.

Mrs Lavery

Question of the Week:
What have been the best parts of lockdown?

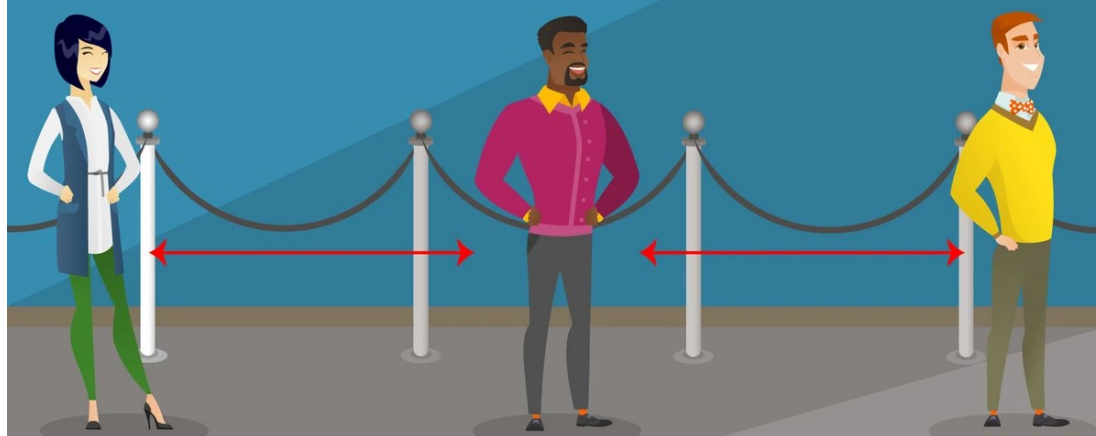
Important Information

Coming to School

Below, please find information about where to go when dropping off/picking up children. Please note THERE IS NO ACCESS TO THE OFFICE FOR PARENTS. Please maintain social distance.

Group	Gate	Door	Group	Gate	Door
Hopscotch/ Nursery	Y1 playground	Hopscotch	Y2/3	KS1 playground	Parrots'
Nursery small group	Y2 playground	Grasmere Room	Y4/5	KS2 playground	Y3
Reception	Car Park	Reception	Y6 a	KS2 playground	Y4
Y1	Friars Lane Nursery Gate	Nursery	Y6 b	KS2 playground	Y5/6

KEEP A SAFE DISTANCE



Maintain 6 Feet (2 Metre) of distance at all times!

 SAFETY
POSTER

safetyposter.com | 1-800-980-4080 | N

